



November 9, 2022

Join us this Sunday for worship at St. Mark's. Randy will start a new series that you don't want to miss entitled "Where Now?". This week the message will be "Why We Left" and is based off of Joshua 24:14-15



Sunday School classes: 8:30 New Life Rm. 18, Sonshine Rm. 17

9:30 Books of the Bibles Rm 17, Disciple Rm. 18, Young Adults Rm. 5

10:45 Faithbuilders Room 18, Good News Choir, R.O.C.K Rm. 19

Traditional services are at 9:30 am and Modern services are at 10:55 am. If you are not able to attend Worship services there will be a live streaming of worship. To watch the life stream, you can join us at 9:30 am Sunday morning at: <https://youtu.be/NZ4qLINTBSA>

## CDO Spaghetti Dinner

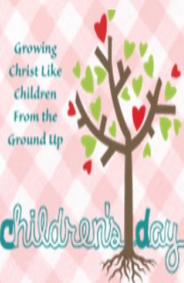
**Last Sunday to buy tickets**

**They will be available at the door**

**Admit One**

All you can eat

Adults	\$10
Children	\$ 5



**November 17, 6-8 PM**

## CDO Fundraiser

Grab your family, friends and neighbors for an all you can eat Spaghetti Dinner being put on by CDO to support the children in getting supplies and other needed items. CDO has been an important part of St. Mark's for a long time and has always been well supported. This is a great way to support it while having a great meal. All families with CDO kids have tickets available and there is a special treat in that the class that has the most sales gets to put a pie in the face of the teacher of the class with the least sales.

## Wednesday Night Fall Programming

Fall programming is in full gear at St. Mark's. The prayer team will meet at 6 pm in the prayer room. The choir will be having rehearsal starting at 6:30 pm. All other programming has also begun. Children, Youth and adult studies will follow our meal together which kicks off at 5:30 pm. Check below for more information about our adult Bible Studies

DAWN - Dinner & Worship Night  
Wednesdays @ 5:30 pm

### Schedule:

5:30-6:15 Meal (family style)  
6:00-6:30 Prayer Team  
6:15-7:30 Children's & Student Ministry  
6:15-7:30 Adult Bible Studies  
6:30-8:00 Choir Practice



## SECOND WINDERS November 10

Second Winders will be having their monthly gathering. You can come around 11:30 am to visit and catch up/ The meal will be served at noon. This



month we will be having a Turkey Lunch. We will provide the turkey and fixings. We are asking everyone for \$3 plus a side dish or dessert.



Following the meal we will have a special program as Susan Howard joins us to portray 1st lady Helen Herron Taft, wife of our 27th president William Howard Taft. She will share stories about many of the less-

er know 1st ladies.

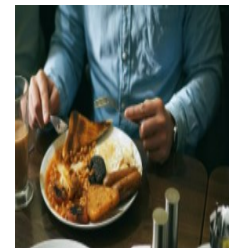
Come enjoy a great program and then feel free to hang around afterward for an extended time of fellowship and games.

## Men's Breakfast

Saturday, November 12th

Hunting for some great fellowship and great food?

We invite you to join us on Saturday October 8th, at 8:00 am for the men's breakfast. Along with the food there will be a devotion and a lot of fun.



## St. Mark's Stewardship Drive Continues

Our annual commitment drive is still underway and you hopefully have your pledge card by now.



### St. Mark's Bethany

During 2023, I commit with the grace and help of God, to know Jesus better and support the ministries of St. Mark's with my prayers, presence, gifts, service & witness.

ALL YOU CAN  
Gain All You Can  
Save All You Can  
Give All You Can

The amount I intend to give during 2023 is:

yearly ☐  
monthly ☐

Prayers Presence Gifts Service Witness

My financial commitment  
to St. Mark's for 2023 is:  
yearly ☐  
monthly ☐

If not let us know and we will get one to you. Great things are ahead for St. Mark' Bethany. **Read the letter from pastor Randy for more information on page 9.**



# Prayer Needs November 9 - 16

## Scripture reading: 2 Corinthians 9: 6 - 15

Praise God for all he has done for us as we followed Him step by step through this time transition.

Repent of our sins and Receive God's grace and mercy.

Ask God : For wisdom on saving all we can so that we can support ministry all we can.

For guidance on supporting the ministries of the church with our presence.

perseverance for the leaders in the Global Methodist Church as they receive many churches from around the world.

Discernment for other churches and pastors going through this process

Leaders of our government to serve with righteousness and integrity.

Yield our wants to God's desires as we go forward to love, disciple, worship, and serve.



of

## Pumpkin Derby



# THE MANGER PROJECT



**Coming November 27th, 2022 4-6pm**

It's Christ Centered and Action Driven

## Joseph's Corner

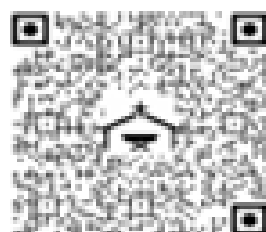
The Manger Project is a fun interactive project that helps families focus on the true meaning of Christmas while building a wooden manger.

This hands-on experience gives parents a chance to teach their kids hard work, perseverance and most importantly, why the manger (God coming to earth as a baby) is so important to their faith.

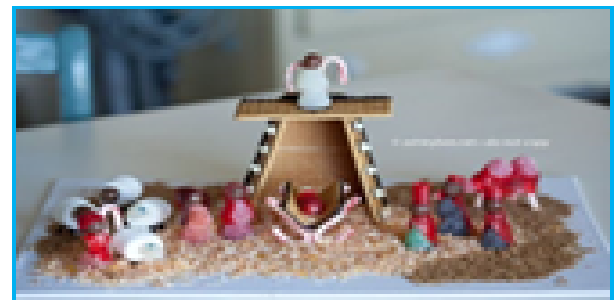
Bring your hammer and your kids or grand-kids and let your heart be captured by the wonder of the lowly manger.

Fascinate your family with Christ this Christmas.

This Experience is  
**FREE**—Register now



## Mary's Kitchen



Enjoy working together as a family building a gingerbread Nativity

## Cookie Contest



8140 NW 36th Street, Bethany





# KIDMIN NEWS

Staying Up to Date with the Latest Happenings

## Sunday Mornings: Children's and Wee Worship



Discovering the Fruit of the Spirit  
Sunday, Nov 13th:

Bring your version of fruit sushi to share!



## Wednesday Evenings:







Bible Bootcamp gives 3rd-5th graders an opportunity to discover how to use their **Bible**.



Boot Camp Soldiers:

Declan, Ryder, Alexander, Michael, Sam, Selah, Reagan, Sarah, Aliyah, Peyton, Emersyn







St. Mark's will again be taking part in CareShare for students at Overholser School. You can pick up your child on the tree in the foyer starting Sunday, November 20th. You can do it as a family a Sunday School class or any way you want. Each child will have a minimum of \$75. for a gift and we ask you to follow the wish lists on the child's card. Gifts must be turned back in by Sunday, December 4th. You can help make a child's Christmas special. Drop by the tree and find a child just for you.



### Bridal Shower for Lydia Wade

*please join us*

**HOST:** Hosted by Carol Hall, Lorna Garner, Sabrina Beebe, and Katie Miller

**WHEN:** Sunday, November 20 at 4:00 PM CT

**WHERE:** St Mark's Bethany Church 8140 NW 36th Street Bethany, OK 73008

## **St. Mark's United Methodist Women are now named St. Mark's Bethany Women**

**Our UMW has voted to change their name and wanted to invite all women to join them on the 2<sup>nd</sup> Monday of the month at 10 am as they kick off a new era in St. Markians in mission to our community and world.**

## **Join us as we decorate St. Mark's for Advent**

On Sunday, November 27th, following the 10:55 am worship a team will be decorating the sanctuary and other areas in the church for Advent. You are invited to take part. If you are interested, just show up or contact Becky Roman and she will fill you in on the details.



St. Mark's will again be taking part in CareShare for students at Overholser School. You can pick up your child on the tree in the foyer starting this Sunday, November 20th. You can do it as a family a Sunday School class or any way you want. Each child will Have a maximum of \$75 for their gits. We ask you to follow the wish lists on the child's card. Gifts must be turned back in by Sunday, December 4th. You can help make a child's Christmas special. Drop by the tree and find a child just



[www.pcf4kids.org](http://www.pcf4kids.org)



## St Mark's Bethany Helping Hand Project

**Need a ride to the doctor? Your battery need a jump? Need a few groceries? Let us help you. Please contact Pat at St Mark's (405-789-9033) or Elle Mysinger (469-323-1560).**

**Requests for help will be posted on the Helping Hand Project. Notification of the request will go out to the members of the Helping Hand Project. Whoever can help with the project will notify the group that they will manage the request and then reach out to the person who needs the helping hand.**

**We welcome anyone who would like to join the Helping Hand Project. Please contact Elle or Pat at the Church.**

### Facts and Figures

2022 Annual Budget	635,934
Rec'd toward Operating 11/6/2022	14,374
Year to Date 2022	
Rec'd toward offering (thru 10/25/22)	386,901
Expenses (thru 9/25/22)	432,846

#### Attendance

Sunday, November 6 Total	257
Traditional (with children)...	145
Modern	68
Online	44

### Prayer Box

Cheryl Andrews	Kathi Fisher
Tiffany Montesano	David Roman
Lavina Bonifield (DIL Margaret Bonifield)	Jan Johnson
Ina Walker (sister Bobbi Pinkerton)	Roger Pautsch
Mike Kolar (son of Ruth Martyn)	Chris Brehm
George Kloss	Bill Rosenthal (BIL Elaine Talbot)
Judy McMinn	Carol Rosenthal (SIL Elaine Talbot)
Marty Croy	Barbara Byrd (sister Dot Lyon)
Patsy McDowell	Tina Logsdon (sister of Carolyn Grady)
Dianna & Jeff Davidson	Gerald Grady
Paula Galt	Charlie Killman (Evans friend)
Esmeralda Manuel	Greg Spiser (Brother of Mike Spiser)
Mary Desmukes	Jason Talbot
Patrick (grandson Joey Pedigo)	Karen Kapka
Reed Brooks	Brent Lawrence (nephew Mike Spicer)





## St. Mark's Bethany

8140 N. W. 36th, Bethany, Oklahoma 73008

405-789-9033 [www.stmarksbethany.com](http://www.stmarksbethany.com)

November 7, 2022

Greetings, St Mark's,

### St. Mark's Mission Statement

To build a  
family of  
believers who  
glorify God  
and help each  
other become  
fully devoted  
followers of  
Jesus Christ

This has been an amazing year at St Mark's. God has blessed us richly in every way imaginable and we rejoice with His goodness. Over the past few months we were able to raise nearly \$400,000 to gain our freedom from the United Methodist Church. That process is now behind us and, as of November 4, we are now a Global Methodist Church. Because of the uniqueness of this year, we decided to do a "low key" finance drive. After having asked so much and received so much from the people of St Mark's, we felt it was right to make our "ask" for 2023 very simple and straightforward. With what is behind us, now is the time to look ahead. And part of looking ahead is budgeting for the ministries God would have us do. And for this we need your help. The first thing we need you to do is pray. Please prayerfully ask God what he would have you give to his work through St Mark's in 2023. The second thing we need you to do is, when you have an answer to your prayers, indicate that amount on the enclosed pledge card. And finally, when you have filled out that card please bring it back to the church or mail it to the church office. It's that simple. No one will call you and harass you. In fact, since there are no names required, we won't even know who made which pledge. That is between you and God, and the card is simply a tool to help us accurately budget.

The question often asked is, "How much should I give?" In God's dealing with the children of Israel in the time before Jesus, the standard amount of giving expected, also known as "the tithe", was set at 10% of income. Neither Jesus, nor any other New Testament writer, speak directly to an amount or percentage of giving expected. The challenge of the New Testament in regard to giving is to do so "generously, faithfully and sacrificially". So, the short answer to the question is only you and God together can decide what to give. 10% remains a good measuring stick – for some as a goal to strive and plan toward, and for others as a baseline to build from toward ever greater generosity and sacrifice – but ultimately the decision is yours.

Thank you for your past generosity and all it has enabled. Thank you for your current generosity and the ministry it is bringing forth. Thank you for your future generosity and the ministry it will fund for the glory of God. It has indeed been an amazing year and I'm grateful for your partnership in the ministry God has given us here at St Mark's.

Grace, Peace, & Joy,

Randy Wade  
Sr. Pastor

**Love. Disciple. Worship. Serve.**